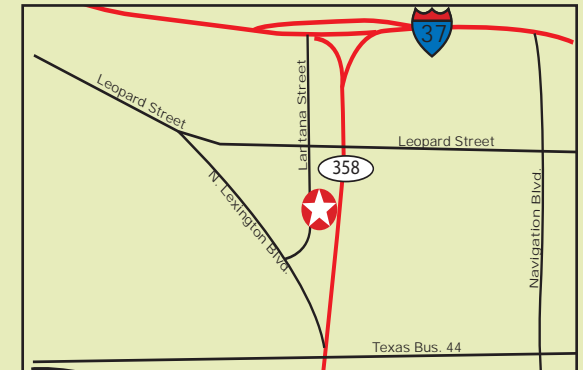


# FOR SALE

Industrial Building Opportunity  
370 Lantana Street, Corpus Christi, TX 78408



**Size:** Approximately 6,700 SF (Lot is .896 acre)  
**Price:** \$355,000.00  
**Zoning:** I-3  
**Legal Description:** LANTANA IND AREA LT 15-B BK 5  
**Comments:** Freestanding industrial building located on Lantana Street, between Navigation and Leopard Street. Possible uses include light manufacturing and oil field related services. Office space includes a conference room with projection studio, coffee bar, multiple offices, reception, shipping/receiving with 8' bay door, restroom and storage rooms.



**Joe Adame & Associates, Inc.**  
FULL SERVICE COMMERCIAL & INDUSTRIAL REAL ESTATE

[www.joadame.com](http://www.joadame.com)

*For more information please contact:*

**Mark Adame, CCIM, SIOR**

361-880-5888

[mark@joeadame.com](mailto:mark@joeadame.com)

Full Service Commercial and Industrial Real Estate

◆ Land ◆ Retail ◆ Industrial ◆ Investment ◆ Office

*The information contained herein has been obtained from sources we deem reliable. We have no reason to doubt its accuracy, but we do not guarantee it.*

FOR SALE

370 Lantana Street, Corpus Christi, TX 78408



*For more information please contact:*

**Mark Adame, CCIM, SIOR**

361-880-5888

*mark@joeadame.com*

**Joe Adame & Associates, Inc.**  
[www.joeadame.com](http://www.joeadame.com)

4550 Corona Drive, Corpus Christi, Texas 78411 Phone: 361-880-5888 Fax: 361-880-5883

FOR SALE

370 Lantana Street, Corpus Christi, TX 78408



*For more information please contact:*

**Mark Adame, CCIM, SIOR**

361-880-5888

*mark@joeadame.com*

**Joe Adame & Associates, Inc.**  
[www.joeadame.com](http://www.joeadame.com)

4550 Corona Drive, Corpus Christi, Texas 78411 Phone: 361-880-5888 Fax: 361-880-5883

FOR SALE

370 Lantana Street, Corpus Christi, TX 78408



*For more information please contact:*

**Mark Adame, CCIM, SIOR**

361-880-5888

*mark@joeadame.com*

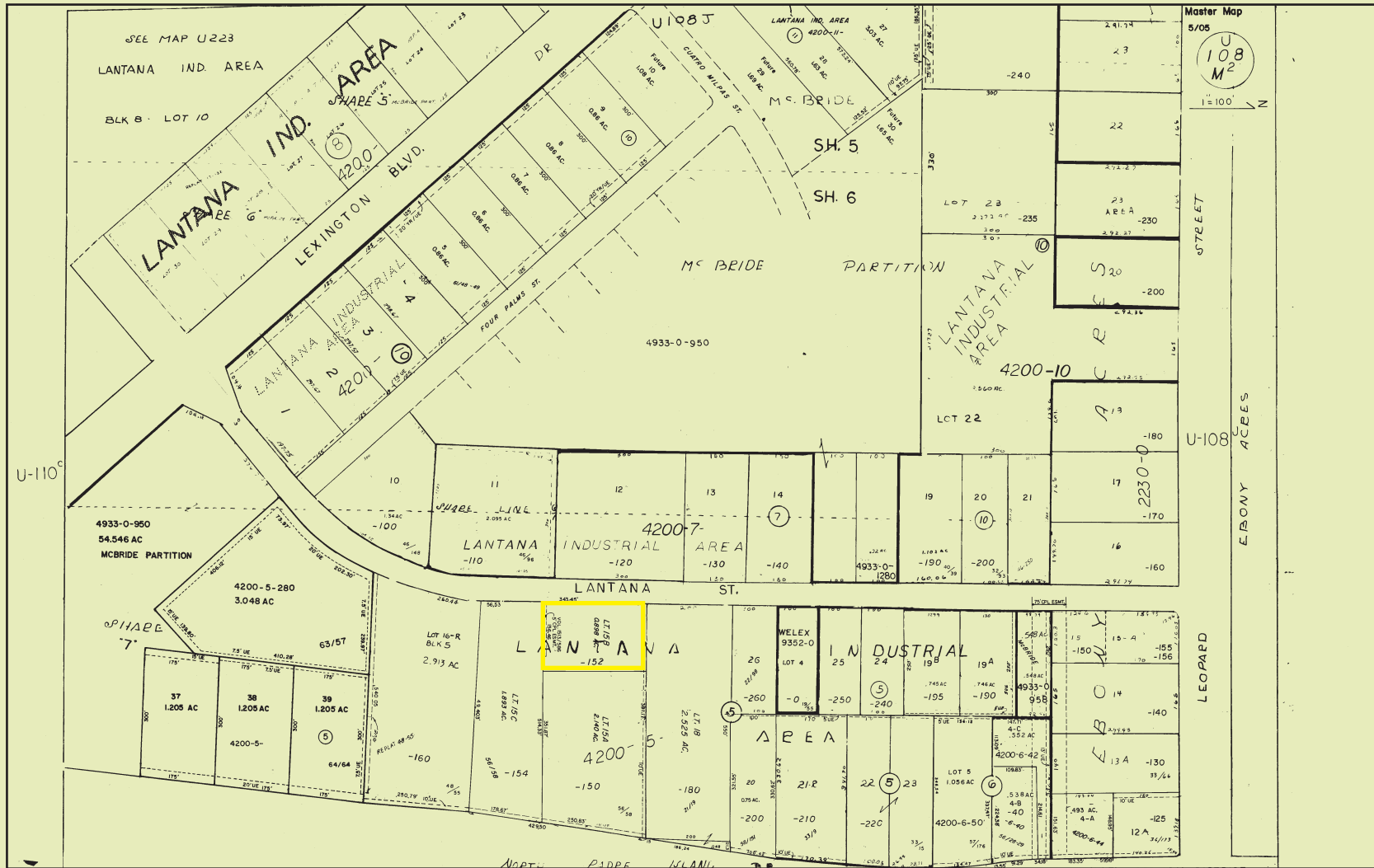


**Joe Adame & Associates, Inc.**  
[www.joeadame.com](http://www.joeadame.com)

4550 Corona Drive, Corpus Christi, Texas 78411 Phone: 361-880-5888 Fax: 361-880-5883

FOR SALE

370 Lantana Street, Corpus Christi, TX 78408



For more information please contact:

**Mark Adame, CCIM, SIOR**

361-880-5888

[mark@joeadame.com](mailto:mark@joeadame.com)



**Joe Adame & Associates, Inc.**  
[www.joeadame.com](http://www.joeadame.com)

4550 Corona Drive, Corpus Christi, Texas 78411 Phone: 361-880-5888 Fax: 361-880-5883